



**CLAIRE HOUSE CHILDREN'S HOSPICE**

# ALL ABOUT CLAIRE HOUSE CHILDREN'S HOSPICE



Claire House Children's Hospice is a place where poorly children and their families can come for a rest and have some fun.

It is a charity, which means the money needed to keep it open comes from kind and generous people fundraising and donating their own money.

Claire House is named after a little girl called Claire, who was poorly and didn't have a Hospice she could come to for rest and fun.

So her parents decided to start fundraising to build one!



# WHO DOES CLAIRE HOUSE SUPPORT?

**We can support in lots of different ways. But the main people we support are:**

**Children and young people who are very poorly age 0-25**

**Pregnant mums whose baby is poorly**

**The family of a poorly young person**

# WHAT DOES CLAIRE HOUSE DO?



## Respite care

This means children who are poorly and their families can come and stay for a few days at the Hospice.

Mum and dad can have a break from giving medicine and caring for their child 24/7.

## Play Team

Whilst visiting the Hospice, children get to spend time with our play specialists who plan lots of fun activities. They make sure no one is left out! They have special equipment so that children who can't paint with their hands can use their eyes to paint a picture!

## Counselling

We have a family support team who help all members of the family if they are feeling stressed or sad. They can talk to a counsellor and find ways to deal with the sadness or stress.

We have lots of other teams and rooms at Claire House, including a heated pool and physiotherapists that can take children for a swim and a stretch; a music therapist; a sensory room; even a garden with a zip wire you can use with a wheelchair.

# HOW IT ALL BEGAN

In 1988, Claire Cain was very poorly. She had to spend lots of time in Hospital and her family weren't able to see her very much.

Claire's mum and dad decided that this wasn't okay. So wanted to fundraise for a Hospice so families in the future could spend all the time they needed with their poorly children.

They started off with a car boot sale that raised £96. Years later, in 1998 Claire House opened its doors!

THIS IS CLAIRE



# CLAIRE BEAR

Claire Bear is our loveable mascot. She loves everything about Claire House and loves coming to say hello to people who have helped Claire House!



THIS IS CLAIRE BEAR

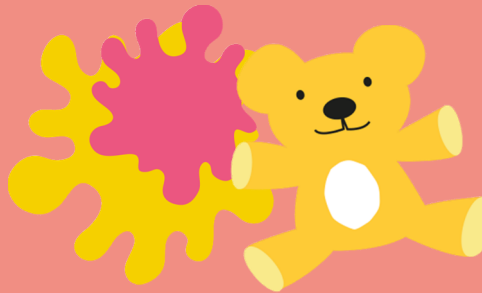


# HOW IS THE MONEY DONATED TO CLAIRE HOUSE USED?

**£20.18 could pay for an hour of a nurse**



**£26.36 could pay for an play session with one of our play specialists**



**£37.53 could pay for an counselling session**



# HOW CAN YOU HELP?

People in our community do amazing things everyday to help Claire House. Whether it be raising money, spreading the word about what we do, or volunteering. Everyone can help make a difference to a poorly child's life.

If you want to help, think about your own role within your school or community. Maybe you are part of a club or the School Council? Maybe you just want to show how much you care?



Sign up for a fun run or other sponsored event

Tell someone you know about Claire House

Hold a bake sale

Take part in one of our volunteering awards

Dress up or down for the day

Become a Claire House advisor

Anything you decide to do will help! Find out more on our website [www.clairehouse.org.uk](http://www.clairehouse.org.uk)



**THANK YOU FOR LEARNING ABOUT CLAIRE  
HOUSE**

